

The Cleveland Cuyahoga County Port Authority Ohio: Revitalizing Economic Growth and Connecting the Heartland

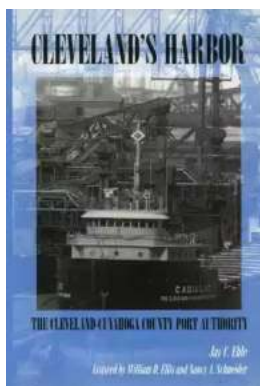


The Cleveland Cuyahoga County Port Authority in Ohio is a powerhouse when it comes to economic growth, innovation, and connectivity. Situated on the southern shore of Lake Erie, the port serves as a gateway to global markets and plays a crucial role in revitalizing regional businesses, tourism, and job creation.

A Glimpse into the Rich History

The Port of Cleveland has a fascinating history that dates back to the early 19th century. It was established in 1827 and has since evolved into a major transportation hub. The location was strategic due to its proximity to the Ohio and

Erie Canal, which connected Lake Erie with the Ohio River, opening up trade opportunities and propelling Cleveland's growth.



Cleveland's Harbor: The Cleveland—Cuyahoga County Port Authority: The Cleveland-Cuyahoga County Port Authority (Ohio) by Jay C. Ehle(Kindle Edition)

★★★★★ 5 out of 5

Language : English
File size : 1469 KB
Text-to-Speech : Enabled
Enhanced typesetting: Enabled
Word Wise : Enabled
Print length : 256 pages
Screen Reader : Supported



Over the years, the port has continuously adapted and expanded its operations. Today, it boasts state-of-the-art facilities equipped to handle a wide range of cargo types, from containers and bulk commodities to project cargo and breakbulk. With extensive rail and road infrastructure, the port provides seamless connections to inland markets.

Economic Impact and Job Creation

The Cleveland Cuyahoga County Port Authority is a crucial driver of economic growth in Northeast Ohio. According to a recent economic impact study, the port generates over \$3.5 billion in annual economic activity and supports nearly 20,000 jobs. These impressive numbers highlight the port's importance in sustaining local businesses and driving employment.



Through its various initiatives and partnerships, the port aims to attract new companies, drive innovation, and foster entrepreneurship. The 'Port Business Development and Predevelopment Loan Program' offers financial support to businesses looking to establish or expand their operations near the port. This initiative not only spurs economic growth but also leads to job creation, transforming the region into a thriving business hub.

Connecting the Heartland to Global Markets

The Cleveland Cuyahoga County Port Authority plays a vital role in connecting the heartland of America, its industries, and agricultural producers to global

markets. With direct access to the St. Lawrence Seaway and the Great Lakes, the port provides an efficient transportation route for Midwest businesses.

Its strategic location means that numerous international shipping lines have established services to and from the port. This enables businesses to tap into global trade networks, import essential goods, and export products manufactured in Ohio. The port's commitment to sustainability and efficient operations ensures cost-effective and environmentally friendly transportation solutions for businesses.

Environmentally Responsible Practices

The port authority is dedicated to maintaining sustainable practices and minimizing its environmental impact. It actively works on reducing air emissions, investing in energy-efficient technologies, and promoting the use of clean fuels. With a focus on reducing carbon emissions, the port is committed to a greener future.

Furthermore, the port has implemented initiatives to preserve and protect the natural habitat surrounding its facilities. These efforts include wetland restoration, shoreline cleanup, and wildlife conservation projects. By prioritizing environmental stewardship, the Cleveland Cuyahoga County Port Authority sets an example for others in the industry.

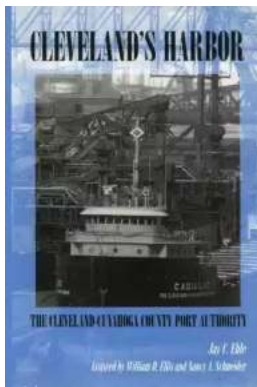
Promoting Tourism and Recreation

In addition to its economic contributions, the Cleveland Cuyahoga County Port Authority plays a significant role in promoting tourism and providing recreational opportunities. Its waterfront development projects have transformed previously underutilized areas into vibrant public spaces and popular destinations for residents and visitors alike.



The port's waterfront activities include cruise services, ferry rides, and various water-based recreational activities. These attractions not only stimulate the local economy through tourism but also enhance the quality of life for the community. With stunning views of Lake Erie, the port serves as a gathering place for events, festivals, and cultural celebrations.

The Cleveland Cuyahoga County Port Authority Ohio is a key player in the region's economic growth and development. Its rich history, commitment to sustainability, and strategic location make it an integral part of connecting the heartland to global markets. Through job creation, business support, and tourism promotion, the port continues to contribute to the prosperity and overall well-being of the community.



Cleveland's Harbor: The Cleveland—Cuyahoga County Port Authority: The Cleveland-Cuyahoga County Port Authority (Ohio) by Jay C. Ehle(Kindle Edition)

★★★★★ 5 out of 5

Language : English
File size : 1469 KB
Text-to-Speech : Enabled
Enhanced typesetting : Enabled
Word Wise : Enabled
Print length : 256 pages
Screen Reader : Supported



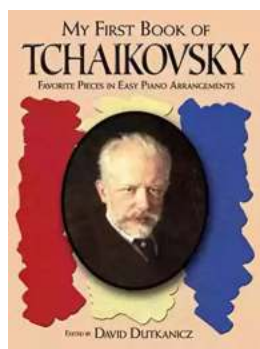
On July 22, 1796, General Moses Cleveland established the mouth of the Cuyahoga River as the port of entry for the Ohio frontier. He could not have foretold the developments that would turn this hostile marsh into Thriving economic and community center. With its 200th anniversary, the port, now governed by the Cleveland-Cuyahoga County Port Authority, is home to the Rock & Roll Hall of Fame, the future Great Waters of the World Aquarium, and the Great Lakes Science Museum, as well as a Foreign Free-Trade Zone. Cleveland's Harbor chronicles the challenges, struggles, and politics of establishing and maintaining this major port—from General Cleaveland to Mayor Michael White. Among those whose dedication and ingenuity fostered the port were Lorenzo Carter, who cultivated the first settlement; Levi Johnson and the Turhooen brothers, builders of The Enterprise—Cleveland's first commercial vessel; Alfred Kelley, Governor Ethan Allen Brown, and Micajah Williams, who were instrumental in getting the canal built connecting Lake Erie to the Ohio River; John Malvin, a freedman, who became the first black vessel owner, a captain, and minister for the First Baptist Congregation; Eli Peck, designer of the forerunner of the classic ore boat; Alexander McDougall, who fashioned the

innovative shaleback hull; and George Hulett, who, with the support of Andrew Carnegie and Charles Schwab, revolutionized harbor operations with his invention of the unloader. In 1958, the St. Lawrence Seaway was completed and Congress officially classified the Great Lakes as the Fourth U.S. coastline. The Cleveland-Cuyahoga County Port Authority, consisting of appointed civic leaders from various backgrounds, was created a decade after the opening of the Seaway to direct the economic development of the lakefront and increase commerce. Today, the Port Authority faces new challenges in its continued commitment to enrich the Cleveland-Cuyahoga County region.



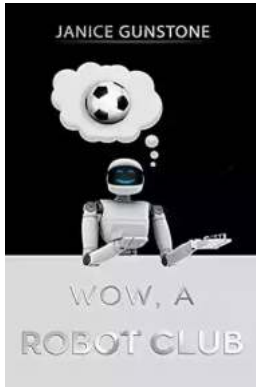
The Ultimate Guide to New Addition Subtraction Games Flashcards For Ages 3-6

In this day and age, countless parents are searching for innovative and effective ways to help their young children develop essential math skills. It's no secret that...



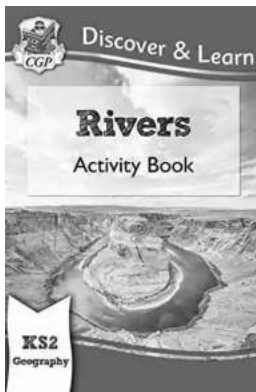
The Ultimate Guide for the Aspiring Pianist: Unleash Your Inner Musical Prodigy with Downloadable Mp3s from Dover Classical Piano Music

Are you a beginner pianist feeling overwhelmed by the sheer amount of music available to you? Do you dream of tickling the ivories with the grace and skill of a concert...



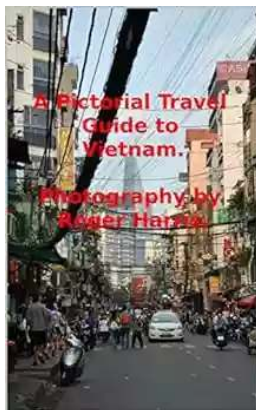
Wow Robot Club Janice Gunstone - The Mastermind Behind the Magic

Robots have always fascinated us with their ability to perform tasks beyond human capabilities, seamlessly blend into our lives, and open up new...



Ideal For Catching Up At Home: CGP KS2 Geography

Are you looking for the perfect resource to catch up on your child's geography lessons at home? Look no further! CGP KS2 Geography is the ideal tool to help your child excel...



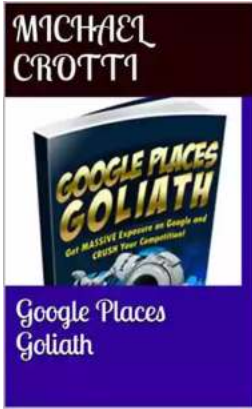
The Ultimate Pictorial Travel Guide To Vietnam: Explore the Hidden Beauty of this Enchanting Country

Discover the rich history, breathtaking landscapes, and vibrant culture of Vietnam through this captivating and comprehensive travel guide. ...



Unlocking the Secrets of Compact Stars: Exploring Equation of States with General Relativistic Initial Data

Compact stars have always been a topic of fascination for astronomers and physicists alike. These celestial objects, also known as neutron stars or white...



Unveiling the Hidden Gem: Google Places Goliath Valley Mulford

Are you tired of visiting the same old tourist attractions and craving something unique and off the beaten path? Look no further than Google Places Goliath Valley Mulford – a...



Essays Towards Theory Of Knowledge: Exploring the Depths of Understanding

Are you ready to delve into the fascinating realm of knowledge? Do you want to expand your understanding of various subjects and explore the depths of...